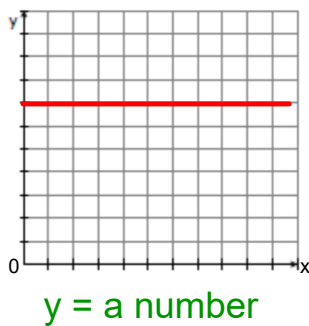


Types of RELATIONS

1) ZERO (aka CONSTANT) Looks like a straight line PARALLEL to the x-axis



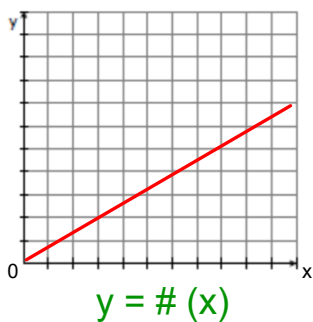
ROC is \emptyset

NOT proportional

Dependant variable remains constant:

hrs	1	2	3
costs	20	20	20

2) DIRECT

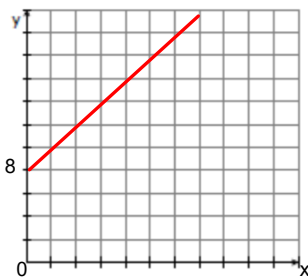


Looks like a straight line that crosses the origin (0,0)

ROC is constant

#'s are proportional

3) PARTIAL



$y = \#(x) \pm \text{a number}$

Looks like a straight line that DOES NOT pass through

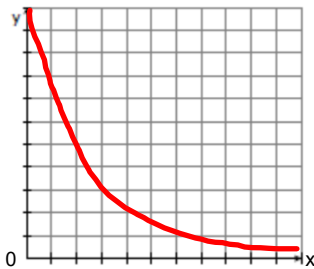
(0,0)

Not parallel to an axis

ROC is constant

Not proportional

4) INVERSE (aka Rational)



$y = \frac{\text{total}}{x}$

Looks like a CURVED line

ROC is not constant

Not proportional

IND #'s increase while DEP #'s decrease